

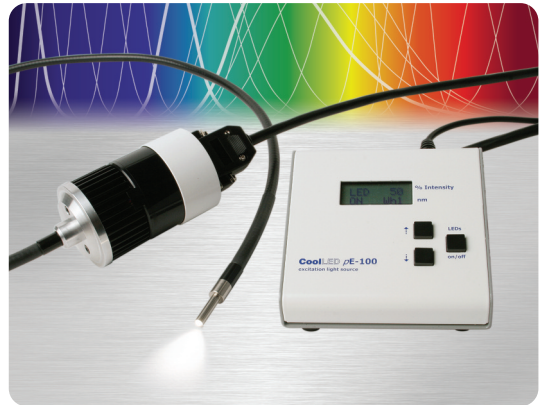
▶ PRODUCT DATASHEET

CoolLED pE-100-LG

The pE-100-LG is a compact and powerful LED source which delivers light via a fixed 3mm diameter liquid light-guide. The unit can be specified with any of CoolLED's pE-100 LED wavelengths. Liquid light-guide delivery of light means that unwanted electrical or mechanical interference can be kept away from the sample being illuminated.

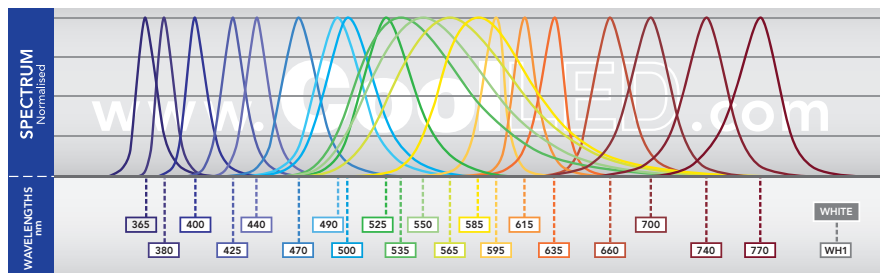
When the unit is fitted to a microscope, an optional collimating adaptor can be specified. Adaptors for a wide range of microscopes are available. Triggering of the unit is by TTL trigger via a BNC connection.

Each unit is supplied with a pE-100-LG head, a fixed 3mm diameter - 1m long liquid light guide, control pod, power supply and cable. Longer light-guides can be supplied on request.



▶ WAVELENGTHS

*New LED wavelengths are continually being developed, visit www.cooled.com for the latest list



Intensity: As performance is constantly increasing, for latest data visit: www.cooled.com/Life-Sciences-Analytical/Technical/Information/LED-Intensity/

▶ PRODUCT DETAILS

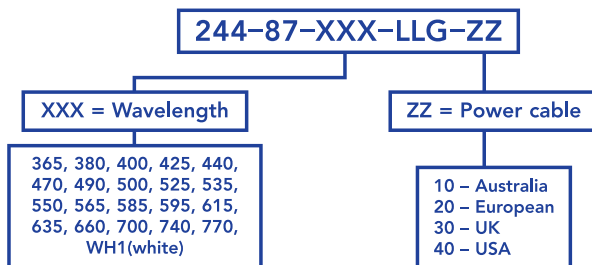
Control:
Instant On/Off
0-100% Intensity in 1% steps
TTL trigger via BNC

Power Consumption:
1W (idle)
32W (full intensity)

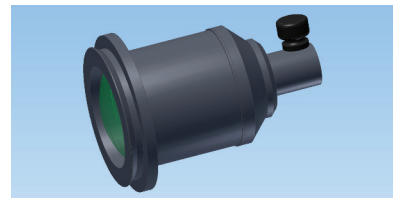
Input:
100-240V AC, 50/60 Hz, 1.5 Amps

Operation:
22 dBA spl

▶ TO SPECIFY



▶ OPTION



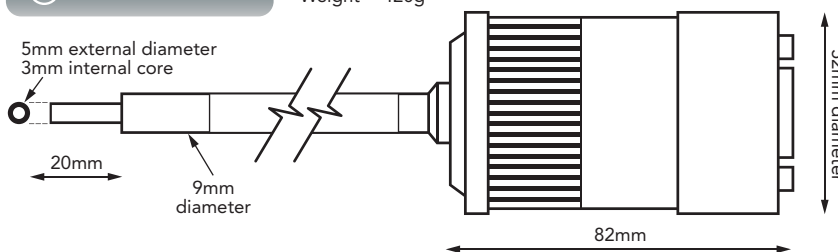
Microscope adaptor with collimating optics.

Product code:
244-10300-YYY

YYY = Microscope adaptor. Select the appropriate adaptor for your microscope at www.cooled.com/Life-Sciences-Analytical/Products/Microscope-Adaptors/

▶ DIMENSIONS

Weight = 420g



▶ CONTACT



Online: www.cooled.com
Phone: +44 (0) 1264 323040 (Worldwide)
1-800-877-0128 (USA + Canada)
Email: info@cooled.com